



# COMPRESSOR



# COMPRESSOR

COMPRESSOR



- SLP-15EFPD
- SLP-22EFPD (prime series)



- SLP-07EE
- SLP-07EE
- SLP-15EF
- SLP-22EF
- SLP-37EF (SLP series 0.75~3.7kW)



SLP-22EED



- SLP-55EG
- SLP-75EG
- SLP-110EG
- SLP-150EG (SLP EG series 5.5~15kW)



- SLP-55F
- SLP-75F (SLP F series 5.5~7.5kW)

201001

- MANUAL SPRAY GUN
- AUTO GUN
- SPECIAL GUN
- ADHESIVE GUN
- LOW PRESSURE SUPPLY & CONTROL
- LOW PRESSURE SUPPLY&CONTROL ACCESSORY
- HIGH PRESSURE SUPPLY & CONTROL
- HIGH PRESSURE SUPPLY&CONTROL ACCESSORY
- FLOWGUN
- AIR DUSTER
- ELECTROSTATIC GUN
- CONSTRUCTION GUN
- FOOD SPRAY & SUPPLY
- CLEANING GUN
- SAND BLASTING GUN
- UNDERBODY GUN
- AIR BRUSH
- AEROSOL
- ACCESSORY
- INDUSTRIAL PRODUCTS
- COMPRESSOR
- ROBUST CASE
- SPECIAL ITEM

Related Products



Hoses & Fittings



Gun washer



Diaphragm Paint Pump



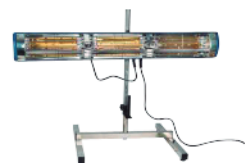
Paint Regulator



Hose holders



Solvent Recyclers



IR Drying Units

# COMPRESSOR

CLASS 0  
CLASS ZERO  
OILFREE



SLP-220ED

- SLP-220EF
- SLP-300EF  
(SLP series 22kW/30kW )



- LRST body shop compressor

201001

MANUAL  
SPRAY GUN

AUTO GUN

SPECIAL  
GUN

ADHESIVE  
GUN

LOW PRESSURE  
SUPPLY &  
CONTROL

LOW PRESSURE  
SUPPLY&CONTROL  
ACCESSORY

HIGH PRESSURE  
SUPPLY &  
CONTROL

HIGH PRESSURE  
SUPPLY&CONTROL  
ACCESSORY

FLOWGUN

AIR  
DUSTER

ELECTROSTATIC  
GUN

CONSTRUCTION  
GUN

FOOD SPRAY  
& SUPPLY

CLEANING  
GUN

SAND BLASTING  
GUN

UNDERBODY  
GUN

AIR BRUSH

AEROSOL

ACCESSORY

INDUSTRIAL  
PRODUCTS

COMPRESSOR

ROBUST CASE

SPECIAL ITEM

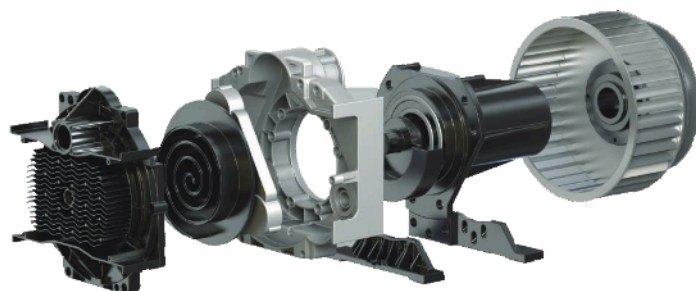
# SLE Enclosures - 2H



**CLASS 0**  
**CLASS ZERO OILFREE**

ISO 8573-1:2010 Class Zero Oil Free scroll compressor  
UL508A rated Control Panel  
Quiet - Sound reducing enclosure cabinet  
Adjustable pressure set points for automatic start/stop  
Oversized 5 micron inlet filters  
Twin belt-driven with sirocco fan for cooling Oil less design - no lubrication required  
User Friendly HMI touch screen with integrated PLC\*  
E-stop standard\*  
BACnet and Modbus communication is standard\*

\*Only SLE 10 (H) to 60 (H)



Technical Data - Oil Less Scroll Compressor

Model	Horse Power (HP)	Pressure On/ Off (PSI)	Flow Rate*1 (SCFM)	Flow Rate*2- High Pressure (SCFM)	Air Outlet (Ball Valve) (NPT)	Sound (dB)	Receiver (GAL)	Voltage (V)	Dimensions LxWxH (Reference)	Weight (lbs)
SLE-2	2	85-115	5.3	-	1/2"	46	7	1ph/208-230V/460V, 3ph/208-230V/460V	22x24x42	260
SLE-2H	2	115-145	-	4.5	1/2"	46	7		22x24x42	260
SLE-3	3	85-115	7.8	-	1/2"	50	7	1ph/208-230V/460V, 3ph/208-230V/460V	22x24x42	270
SLE-3H	3	115-145	-	6.4	1/2"	50	7		22x24x42	270
SLE-5	5	85-115	14.8	-	1/2"	50	7	3Phase/208- 230,460V/60Hz	22x24x42	280
SLE-5H	5	115-145	-	11.7	1/2"	50	7		22x24x42	280
SLE-10	10	94-116	29.6	-	1"	53	-	3Phase/208- 230,460V/60Hz	26x38x62	690
SLE-10H	10	123-145	-	23.4	1"	53	-		26x38x62	690
SLE-15	15	94-116	44.4	-	1"	56	-	3Phase/208- 230,460V/60Hz	26x38x62	875
SLE-15H	15	123-145	-	35.1	1"	56	-		26x38x62	875
SLE-20	20	94-116	59.2	-	1"	58	-	3Phase/208- 230,460V/60Hz	26x38x62	1060
SLE-20H	20	123-145	-	46.8	1"	58	-		26x38x62	1060
SLE-30	30	94-116	88.8	-	1-1/2"	59	-	3Phase/208- 230,460V/60Hz	54x24x62	1710
SLE-30H	30	123-145	-	70.2	1-1/2"	59	-		54x24x62	1710
SLE-40	40	94-116	118.4	-	1-1/2"	60	-	3Phase/208- 230,460V/60Hz	54x24x62	2070
SLE-40H	40	123-145	-	93.6	1-1/2"	60	-		54x24x62	2070
SLE-50	50	94-116	143.7	-	1-1/2"	62	-	3Phase/230, 460V/60Hz	60x52x67	2480
SLE-50H	-	TBD	TBD	--	-	-	-		-	-
SLE-60	60	94-116	172.5	-	1-1/2"	63	-	3Phase/230, 460V/60Hz	60x52x67	2690
SLE-60H	-	TBD	TBD	--	-	-	-		-	-

\*1- air delivery is average discharge air volume at 94PSI converted into atmospheric pressure for SLE-10/15/20/30/40/50/60 - not warrantable

\*2- air delivery is average discharge air volume at 123PSI converted into atmospheric pressure for SLE-10H/15H/20H/30H/40H/50H/60H

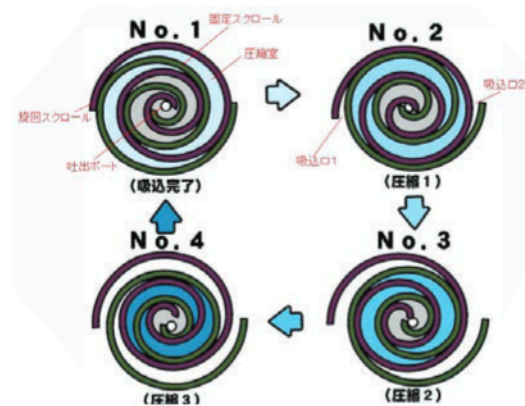
# SLT/SLTE Tank Mount



ISO 8573-1:2010 Class Zero Oil Free scroll compressor

- UL508A rated Control Panel
- Oversized 5 micron inlet filters Premium efficient TEFC motor
- Low vibration Integral cooling fan
- Re-greasable bearings
- Patented tip seal design
- Aftercooler included

ASME code receiver - 30, 60, 80, 120 & 240 gallons  
 Quiet - optional sound reducing enclosure



## Technical Data - SLT

Model	Horse Power (HP)	Pressure On/Off (PSI)	Flow Rate (SCFM)	Flow Rate-High Pressure (SCFM)	Air Outlet (Ball Valve) (NPT)	Phase	Sound (dB)	Receiver*1 (GAL)	Voltage (V)	Dimensions LxWxH (Reference)	Weight (lbs)
SLT-2-30	2	85-115	5.3	-	½"	1 or 3	51	30	115/208-230/460	42x29x38	310
SLT-2H-30	2	115-145	-	4.5	½"	1 or 3	51				
SLT-3-30	3	85-115	7.8	-	½"	1 or 3	62		30	208-230/460	42x29x38
SLT-3H-30	3	115-145	-	6.4	½"	1 or 3	62				
SLT-5-30	5	85-115	14.8	-	½"	3	68	30	208-230/460	42x29x38	340
SLT-5H-30	5	115-145	-	11.7	½"	3	68				
SLT-7.5-80	7.5	85-115	22.6	-	¾"	3	74	80	208-230/460	64x29x48	550
SLT-10-80	10	85-115	29.7	-	¾"	3	75			64x29x49	580
SLT-10D-120	10(5HPx2)	#1 pump 85-115 #2 pump 75-105	29.6	-	¾"	3	72	120	208-230/460	68x37x47	705
SLT-10DH-120	10(5HPx2)	#1 pump 115-145 #2 pump 105-135	-	23.4	¾"	3	72				
SLT-15D-120	15(7.5HPx2)	#1 pump 85-115 #2 pump 75-105	45.2	-	1"	3	78	120	208-230/460	68x37x52	1010
SLT-20D-120	20(10HPx2)	#1 pump 85-115 #2 pump 75-105	59.4	-	1"	3	79			68x37x53	1080

\*1 - Available in different sizes - consult factory

# OFT/OFTE Tank Mount



Oil Less reciprocating piston compressor

TEFC motor standard Intercoolers standard Easy maintenance

Dynamically balanced flywheel for low vibration

Oil less pump with no oil maintenance required

5 micron oversized filter for large dirt holding capacity

Electric sensor tank drain standard UL 508A rated Control Panel - NEMA 1

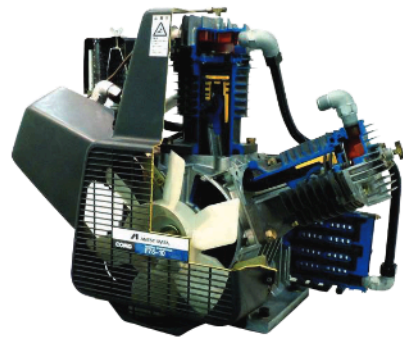
Two-way cooling from fan and flywheel to eliminate excess heat

Composite Piston Technology with insulated wrist pin to reduce bearing heat

OFB/OFT-15



OFB/OFT-30D



## Technical Data - OFT

Model	Horse Power (HP)	Pressure On/Off (PSI)	Flow Rate*1 (SCFM)	Air Outlet (Ball Valve) (NPT)	Phase	Sound (dB)	Receiver*2 (GAL)	Voltage (V)	Dimensions LxWxH (Reference)	Weight (lbs)
OFT-1-30	1	90-120	3.2	1/2"	1 or 3	59	30	1ph, 115/208-230 3ph, 208-230/460	28x19x59.5	200
OFT-2-30	2	90-120	5.7	1/2"	1 or 3	59	30		29x19x59.5	205
OFT-3-60	3	90-120	9.5	1/2"	3	72	60	208-230/460	48x33x54.5	370
OFT-5-60	5	90-120	15	1/2"	3	73	60		48x33x56.5	460
OFT-7.5-80	7.5	90-120	24	3/4"	3	70	80		63x31x56.5	650
OFT-10-80	10	90-120	30	3/4"	3	75	80		63x31x55.5	680
OFT-15-120	15	90-120	41	1"	3	74	120		70x24x59.5	925
OFT-20D-120	20(10x2)	#1 pump 90-120 #2 pump 80-110	29.7	1"	3	78	120		70x52x59.5	1260
OFT-30D-240	30(15x2)	#1 pump 90-120 #2 pump 80-110	80	1"	3	80	240		82x52x64.5	1965

\*1 - air delivery is average discharge air volume at max operating pressure converted into atmospheric pressure. Not warrantable.

\*2 - available in different receiver sizes, consult factory

\*3 - Different PSI - Consult Factory

# LRST

- Efficient IE4 class premium motor
- Oil cooled/lubricated PM motor
- Reliable in tough condition Ensure operation up to 45°C without overheating
- Compact design, tank mounted
- Simple structure, easy maintenance



**LRST-751**  
 Power : 7.5kW  
 Pressure : 1.0MPa  
 FAD : 0.9m<sup>3</sup>/min  
 Air tank capacity : 128L



**LRST-1101**  
 Power : 11KW  
 Pressure : 1.0MPa  
 FAD : 1.45m<sup>3</sup>/min  
 Air tank capacity : 139L



**LRST-1501**  
 Power : 15KW  
 Pressure : 1.0MPa  
 FAD : 2.0m<sup>3</sup>/min  
 Air tank capacity : 139L

Model		LRST-751	LRST-1101	LRST-1501
power	Volt, Hz	200V 50/60Hz		
power	kW	7.5	11	15
		inverter		
pressure	Mpa	1.0		
FAD	m <sup>3</sup> /min	0.9	1.45	2.0
drive system		direct bearing (oil cooled motor)		
control system		inverter		
controlled pressure	MPa	0.83 - 1.0		
outlet diameter		Rc1/2	Rc3/4	
air dryer		none		
noise	Db(A)	63	64	65
air tank capacity	L	128	139	139
size	mm	1240x550x1125	1330x660x1180	1330x660x1180
weight	kg	290	320	340